

# Tier 1 2017 Mapping of *Zostera marina* in Long Island Sound and Change Analysis

By

**Michael Bradley**

University of Rhode Island

Environmental Data Center

[mike@edc.uri.edu](mailto:mike@edc.uri.edu)

and

**Suzanne Paton**

Southern New England Coastal Program

U.S. Fish and Wildlife Service

[Suzanne\\_Paton@fws.gov](mailto:Suzanne_Paton@fws.gov)

THE  
UNIVERSITY  
OF RHODE ISLAND



FINAL - December 2018

## INTRODUCTION

Eelgrass (*Zostera marina* L.) and other species of submerged aquatic vegetation (SAV) play a crucial role in ecosystem function by providing critical habitat for juvenile marine life, stabilizing and developing subaqueous soil, and filtering particles from the water column (Dennison et al. 1993; Fonseca, 1996; Bradley and Stolt, 2006). Furthermore, many species of commercially important finfish and shellfish are directly dependent on SAV beds for refuge, spawning, attachment, and food (Laney, 1997). As such, the Atlantic States Marine Fisheries Commission ([www.asmfc.org](http://www.asmfc.org)) has a stated policy on the assessment, protection, and study of SAV as a recommendation for all member States (ASMFC Habitat Committee, 1997). SAV has been deemed a critical marine resource and is currently protected by both Federal (Clean Water Act; 33 U.S.C. 26 section 1251 et seq) and state legislation (Connecticut Coastal Management Act Chapter 444, Sections 22a-90 to 22a-112, New York Seagrass Protection Act). In addition, monitoring the extent of SAV is a critical component of the Long Island Sound Study's (LISS) 2015 Comprehensive Conservation and Management Plan ([longislandsoundstudy.net](http://longislandsoundstudy.net)).

Mapping the distribution and extent of SAV is a critical first step in understanding, managing, and protecting shallow, subtidal estuarine habitats. Geospatial data provide essential baseline information for government agencies, municipalities, and the scientific community. Neckles et al. (2012) proposed a 3-tiered hierarchical strategy for mapping and monitoring SAV in estuaries of the northeastern U.S. The smallest scale of these tiers (Tier 1), utilizes true-color aerial photography whereby photo signatures of SAV are interpreted and delineated using orthophotography (aerial photographs with the distortion removed). Tier 2 surveys involve a stratified random sampling design whereby percent cover of SAV species is quantified. For the Tier 3 surveys, many metrics such as biomass and plant height are assessed along a transect. For the Long Island Sound study area, there have been four previous Tier 1 survey efforts (2002, 2006, 2009, and 2012) conducted in partnership with the US Fish and Wildlife Service and the LISS (Tiner et al., 2013). The goals of the 2017 Long Island Sound survey were similar to previous surveys: 1) conduct a comprehensive survey of SAV (primarily eelgrass) using similar methods as the previous surveys, and 2) examine broad trends of eelgrass in the Long Island Sound Study area.

## METHODS

### Aerial Photography Acquisition

Digital four-band (true color and infra-red) aerial photographs were taken by a photogrammetry vendor on June 28<sup>th</sup>, 2017 (Figure 1). The extent of the area photographed was based on recent (this century) presence of eelgrass in Long Island Sound (Tiner et al., 2013, Connecticut Dept. of Env. Protection, 2007). The photographs were taken following NOAA's Office of Coastal Management guidelines (Finkbeiner et al., 2001). Based on these guidelines, photographs were

taken at a low sun angle, two hours within low tide, when wind and atmospheric haze were minimal, and when water clarity was high (Figure 2). Altitude of the aircraft during photo acquisition was about 17,000 ft (Quantum Spatial, 2017). Water clarity was measured by volunteers using secchi disks as target dates for acquisition of aerial photography approached. The vendor was chosen by utilizing the USGS Geospatial Product and Service Contracts ([https://geodatacontracts.er.usgs.gov/gpsc\\_information\\_sheet.html](https://geodatacontracts.er.usgs.gov/gpsc_information_sheet.html)).

Shortly after the photography was acquired, pilot areas and draft imagery were sent to project leaders for review and comment. After approval, photography was color balanced, mosaicked, and projected to the Connecticut State Plane meters (NAD83\_2011) coordinate system.

Accuracy assessments of the orthophotography product were done by Quantum Spatial Inc. using GPS control points. Locations of features (e.g. manholes, parking lot lines) on the ground and also visible in the photography were compared and statistically analyzed. The listed accuracy of the orthophotography was  $RMSE_x = 0.207$  m and  $RMSE_y = 0.282$  m (Quantum Spatial, 2017). The pixel resolution of the orthophotography was 0.31 m.

On September 30, 2017, 212 individual orthophotography tiles (408 gigabytes) were delivered on external hard drives to the URI Environmental Data Center. The photography was copied to a lab server for internet distribution utilizing ArcGIS 10.5 Server Image Service technology. As a result, the orthophotography could be viewed in ArcMap (and on the internet) utilizing one data connection.

### Photo-interpretation

Initial eelgrass delineations and areas to be ground-truthed were identified by eye and digitized on-screen by hand using the orthophotography as a base map. Historical data sets (including GPS ground truth points) were also used as supplemental sources to aid in photo interpretation. Areas that have historically supported eelgrass were targeted first for the photo interpretation of new beds. However, to avoid any bias, digitizing of the 2017 polygons was always done with historical data sets turned off. All digitizing was conducted at around a scale of 1:1500. The minimum mapping unit was 0.03 acres, but 88% of the polygons were  $\geq 0.25$  acres.

### Field Work and Ground-truthing

Ground-truthing in the field was conducted by boat between September 8 and October 19, 2017 (ten field days total) (Figure 3). Eelgrass photo-signatures from true-color aerial photographs can be highly variable and flight specific, thus ground-truthing was conducted during the same year the photographs were taken. The presence of eelgrass was determined using a high-definition, digital underwater video camera linked to a GPS and capable of recording video for archive purposes (SeaViewer, Inc.). Not all polygons were ground-truthed in 2017.

The goals of ground-truthing were to verify digital photo signatures of eelgrass, to assess the imagery quality for identification of the deep water edge of eelgrass beds, and to verify areas of change from the 2012 mapping effort. Initial eelgrass delineations and imagery tiles were taken into the field and viewed simultaneously with GPS position using a Trimble GPS device with 1-m real-time horizontal accuracy. The deep water edge of the 2017 imagery was visible at many sites, however GPS and video data were still used to estimate the extent of eelgrass beds in deeper water and to delineate bed edges.

Eight hundred eighty-four GPS data points were collected in the field and coded for presence of eelgrass within and at the edge of eelgrass beds. The edge of an eelgrass bed was defined as when cover dropped to approximately 5%. Final eelgrass delineations were adjusted using the ground truth data (GPS points). In the GIS database, polygons were coded with a habitat type (eelgrass), whether the polygon was field-surveyed with video and GPS.

## RESULTS

Over the summer and fall of 2017 we mapped 1,465 acres of eelgrass in the study area which resulted in a GIS database of 156 polygons. Of these polygons, 51% were field visited and most of them were the larger beds in the study area. Thus, more field-time was spent trying to identify bed edges for the larger beds we mapped. The largest contiguous bed we mapped was in Lords Point, Stonington, CT (165 acres). Additionally, the most eelgrass in our study areas was found east of the Thames River along the Connecticut coast (Figure 4; Table 1).

A web-map was created of the final eelgrass delineations which can be found here:

<http://edc.maps.arcgis.com/apps/View/index.html?appid=5e9065b777d14249a5dbd05bf84ab955>

The data listing for the orthophotography was created by the University of Connecticut and can be found here: [http://cteco.uconn.edu/data/flight2017\\_Ecoast/index.htm](http://cteco.uconn.edu/data/flight2017_Ecoast/index.htm)

### Change Analysis (2012- 2017)

The survey effort in 2012 was interrupted by Hurricane Sandy, thus no field ground-truthing was conducted (Tiner et al., 2013). This raises some questions of comparability when conducting a change analysis with the 2017 mapping since it was intensively field-verified with GPS and underwater video (884 survey points). As a result, we thoroughly reviewed these data by comparing the delineations in 2012 and the historical (2002, 2006, and 2009) GPS and video points in order to verify, assess, and standardize these delineations to the 2017 delineations and database. Luckily, many (but not all) of the delineations from 2012 intersected with GPS and video surveys from previous years. Further, we removed map units from the 2012 dataset which were not comparable to our map unit classifications. These map units consisted of delineations of generic “SAV” which were not field-verified. Additionally, we adjusted our study area to

correspond to the official Long Island Sound Study area of interest (Figure 1). Thus, eelgrass beds in Little Narragansett Bay R.I. and south of Orient Point, N.Y. were not included in our analysis. However, we have included the change analysis for Little Narragansett Bay as an appendix (Appendix A). As a result of the study area modification, we calculated a total of 1,893.3 acres of eelgrass in 2012 which is a lower number than previously recorded by Tiner et al. (2013) (Table 1).

In order to quantitatively assess changes of eelgrass extent between 2012 and 2017, we intersected the two polygon data layers to create one polygon layer using the ‘union’ command in ArcGIS. Database queries were then conducted to code all polygons within the resultant data layer with the following: eelgrass present in both years; eelgrass present in 2012 but not in 2017; and eelgrass not present in 2012 but present in 2017 (Table 2). Most polygons were coded as eelgrass present in 2012 and in 2017 (Table 2). We then sorted the dataset based on the largest polygons that were areas of change. Due to time constraints, we only assessed polygons that were  $\geq 3$  acres (Table 3.) Using the orthophotography from 2012 and the GPS video observations (points) from previous years (2002, 2006 and 2009), we systematically assessed and analyzed each polygon ( $\geq 3$  acres) to verify whether a change of eelgrass presence and extent had occurred between 2012 and 2017. For example, if an eelgrass signature and a GPS point verifying eelgrass presence was identified in 2012, and that same area had no eelgrass signature and a GPS video observation indicating no eelgrass presence in 2017, then those areas were coded as “Probably Loss”. The reverse is true for areas coded as “Probably Gain” (Figure 5).

Further, if we account for areas that were “Probably Gain” (103 acres in 2017) then we calculate an overall net loss of 102 acres (8.8%) in the Long Island Sound study area (Table 3). However, almost half of the area of change between 2012 and 2017 (47%) was coded as “Uncertain” (Table 3). An example of “Uncertain” polygons include areas where the bottom is not viewable in one or both years due to depth, solar glint, waves, shadows, poor water quality, or other imperfections in the aerial photography. However, we found that there is usually some justification for the existence of the polygon in the 2012 dataset such as eelgrass presence in a previous years’ survey.

## SUMMARY and DISCUSSION

During the summer and fall of 2017 we mapped 1465 acres of eelgrass in the Long Island Sound Study area utilizing aerial photography and field surveys with an underwater video camera, evidence that this is a cost-effective and efficient method to map and inventory eelgrass within the LISS. This amount reflects an 8.8% loss in eelgrass when compared to the 2012 Tier 1 survey. In addition, this loss is comparable to the losses reported in Narragansett Bay, R.I. during this time frame (Bradley et al., 2017).

When conducting our change analysis, we found that 47% of the area of potential change between 2012 and 2017 could not be confidently identified as either loss or gain of eelgrass (polygons coded as “Uncertain”). Some of these areas had a photo signature identified as possible eelgrass in 2012. In 2017, we visited some of these areas and according to our field reconnaissance, the photo signature was rocks or macro algae. These polygons were coded as “Uncertain” (instead of “Probably Loss”) since we did not analyze aerial photography from previous years’. Therefore, it is possible that eelgrass existed in these areas during an earlier survey.

Between 2012 and 2017 we identified two sites in the study area that experienced an overall gain in eelgrass extent (Figure 6A and 6B). These sites near the towns of Mystic and Noank, CT made up almost 68% of the overall gain (103 acres total) in eelgrass. Interestingly, the sites display two very different potential mechanisms for increase of eelgrass at a site: expansion of an existing bed (Noank) and formulation of two separate and larger beds than the one that was there historically (Mystic). Alternatively, we discovered two sites that experienced a majority (54%) of the overall decrease in eelgrass (Figure 7A and 7B). The site south of Mystic harbor (Figure 7B) experienced a loss of eelgrass along the bed edges as well as internally in shallower and possibly warmer waters. We observed the largest decrease of eelgrass in our study area in the Niantic River (Figure 7A). This site has been well studied over the years by scientists at Dominion Energy who have mapped and monitored eelgrass there every year since around 1985 (Keser et al., 2003 and DNC, 2013). In order to independently verify our observations of eelgrass declines at this site, we compared our mapping to what DE observed in 2006 and 2017 and found a very good correlation between the two studies at this site (Figure 8A and 8B).

Discerning trends of eelgrass gain or loss utilizing Tier 1 methodology is best conducted using standardized and comparable datasets and survey methods. In practice however, slight differences and inconsistencies between survey efforts are common if somewhat unavoidable. In order to account for this, we utilized GIS analysis tools to quantitatively assess any trends of eelgrass within the LISS. However, much of the uncertainty and variability we found can be addressed if the Tier 1 surveys were done more consistently on 3-year intervals. Tier 1 surveys are the only way to sample regional study areas such as the LISS and we have shown that using this method we can discern broad trends. However, much of the uncertainty with eelgrass dynamics could be resolved when the Tier 1 surveys are synchronized with other monitoring tiers. In order to fully understand decadal eelgrass dynamics within the LISS or any region, more data (i.e. Tier 2 and 3 surveys; see Neckles et al. 2012) are needed that are collected consistently and that utilize standard survey methods. Indeed, more confident ecological conclusions and management decisions can be made by implementing this mapping and monitoring strategy.

## ACKNOWLEDGEMENTS

This work was funded by the Long Island Sound Study under Interagency Agreement DW-014-92386201 between the U. S. Environmental Protection Agency and the U.S. Fish and Wildlife Service. The authors are imminently grateful to boat Captain Tom Halavik. We didn't hit a single rock (!) which is a testament to his superior navigation skills in the shallow rocky waters of eastern Long Island Sound.

## REFERENCES CITED

- Bradley, M.P., M.S. Stolt. 2006. Landscape-level seagrass-sediment relation in a coastal lagoon. *Aquatic Botany* 84 121-128. Elsevier.
- Bradley, M., C. Chaffee, and K. Raposa. 2017. 2016 Tier 1 Mapping of Submerged Aquatic Vegetation (SAV) in Rhode Island and 20-year Change Analysis. Rhode Island Coastal Resources Management Council, Wakefield, RI. <http://www.crmc.ri.gov/sav.html>
- Connecticut Department of Environmental Protection. 2007. An Assessment of the impacts of Commercial and Recreational Fishing and Other Activities to Eelgrass in Connecticut's Waters and Recommendations for Management. Connecticut Department of Environmental Protection. <http://www.ct.gov/deep/lib/deep/fishing/saltwater/eelgrassreport.pdf>
- Dennison, W.C., R. J. Orth. 1993. Assessing water quality with submersed aquatic vegetation: habitat requirements as barometers of Chesapeake Bay health. *BioScience* 43(2): 86-94.
- Dominion Nuclear Connecticut. 2013. Monitoring the marine environment of Long Island Sound at Millstone Power Station. Annual Report (2012). Eelgrass studies, pp 53-77.
- Fonseca, M.S. 1996. The role of seagrasses in nearshore sedimentary processes: A review. *In* Estuarine Shores: Hydrological, Geomorphological and Ecological Interactions. C. Roman and K. Nordstrom. Boston, MA, Blackwell: 261-286.
- Finkbeiner, M., B. Stevensen, and R. Seaman. 2001. Guidance for benthic habitat mapping: An aerial photographic approach. NOAA Coastal Services Center. <https://coast.noaa.gov/data/digitalcoast/pdf/bhm-guide.pdf>
- Keser, M., J.T. Swenarton, J.M. Vozarik, and J.F. Foertch. 2003. Decline in eelgrass (*Zostera marina* L.) in Long Island Sound near Millstone Point, Connecticut (USA) unrelated to thermal input. *Journal of Sea Research*. 49 pp 11-26.
- Laney, R.W. 1997. The relationship of seagrass ecological value to species managed by the ASMFC: A summary for the ASMFC Submerged Aquatic Vegetation Subcommittee in Stephan, C.D. and T.E. Bigford, editors, *Atlantic Coastal Submerged Aquatic Vegetation: a review of its ecological role, anthropogenic impacts, state regulation and value to Atlantic coastal fisheries*. ASMFC Habitat Management Series No. 1. Washington, DC
- Tiner, R., K. McGuckin, and A. MacLachlan. 2013. 2012 Eelgrass Survey for Eastern Long Island Sound, Connecticut and New York. U.S. Fish and Wildlife Service. Hadley, MA.
- Quantum Spatial. 2017. Long Island Sound, CT 2017 Coastal Orthoimagery Project Report. USGS Contract # G16PC00016. Quantum Spatial, Inc. Lexington, KY.



Table 1. Acreage results and dates\* from the Tier 1 eelgrass surveys done in LIS.

	6/18/2002	6/16/2006	7/14/2009	8/7/2012**	6/28/2017
LittleNarragansett Bay (LNB)	285.8	283	343	327.1	
<i>Rhode Island Waters:</i>	<i>111</i>	<i>93.9</i>	<i>153.5</i>	<i>168.3</i>	<i>93</i>
<i>LNB shifted to New London East</i>	<i>174.8</i>	<i>189.2</i>	<i>189.5</i>	<i>158.7</i>	
Stonington Harbor	42.8	70.8	55.7	57.7	
Quiambog Cove	357.2	427.9	407.3	388.2	
Mystic Harbor	78.9	140.8	161.7	164.8	
Palmer-West cove	34.8	34.9	22.7	23	
Mumford Cove	86.2	75.2	82.1	91.1	
Paquonock River	30.1	27.2	24.1	25.3	
New London Harbor	30.6	34.5	33.5	41.7	
<b>NEW LONDON EAST</b>	<b>835.4</b>	<b>1000.5</b>	<b>976.6</b>	<b>950.5</b>	<b>766</b>
Goshen Cove	157	152.1	124.4	121.3	
Jordan Cove	43.3	36.8	38.4	44	
Niantic Bay	138.7	268.9	211.9	243.5	
Rocky Neck SP	102.8	110.5	102.7	104.9	
CT River Area			2.1		
Duck Island Roads	1.1	6.4	6.4	7.7	
<b>NEW LONDON WEST</b>	<b>442.9</b>	<b>574.7</b>	<b>485.9</b>	<b>521.4</b>	<b>338</b>
Fishers Island NY	193.5	201.3	345.9	403	
<b>FISHERS ISLAND NY</b>	<b>193.5</b>	<b>201.3</b>	<b>345.9</b>	<b>403</b>	<b>347</b>
North Shore NY		24.9	10.5	10.9	
Plum Island NY		9.5	7.6	7.5	
<b>ORIENT PT / PLUM IS</b>		<b>34.4</b>	<b>18.1</b>	<b>18.4</b>	<b>14</b>
<b>TOTAL LISS study area *** (excluding RI waters)</b>	<b>1471.8</b>	<b>1810.9</b>	<b>1826.5</b>	<b>1893.3</b>	<b>1465</b>
TOTAL LIS watershed (RI, NY, and CT waters)	1582.8	1904.8	1980	2061.5	1558

\*Date of aerial photography acquisition.

\*\* These data were not field surveyed. Thus, these total acreages could not be verified for 2012.

\*\*\* Future surveys will take place only in the Long Island Sound Study NY and CT coastal study area and will exclude RI waters which are already tracked in Rhode Island.

Table 2. Acreage results of the intersection of the 2012 and 2017 datasets.

2012	2017		
		Yes	No
	Yes	1101	797
	No	363	xx
Total area of change between the 2 years		1160	

Table 3. The results from the change analysis of individual polygons between the two years.

Type of Change	Acres
Probably Gain	103
Probably Loss	205
Uncertain	531
Not Assessed	320
Total	1159

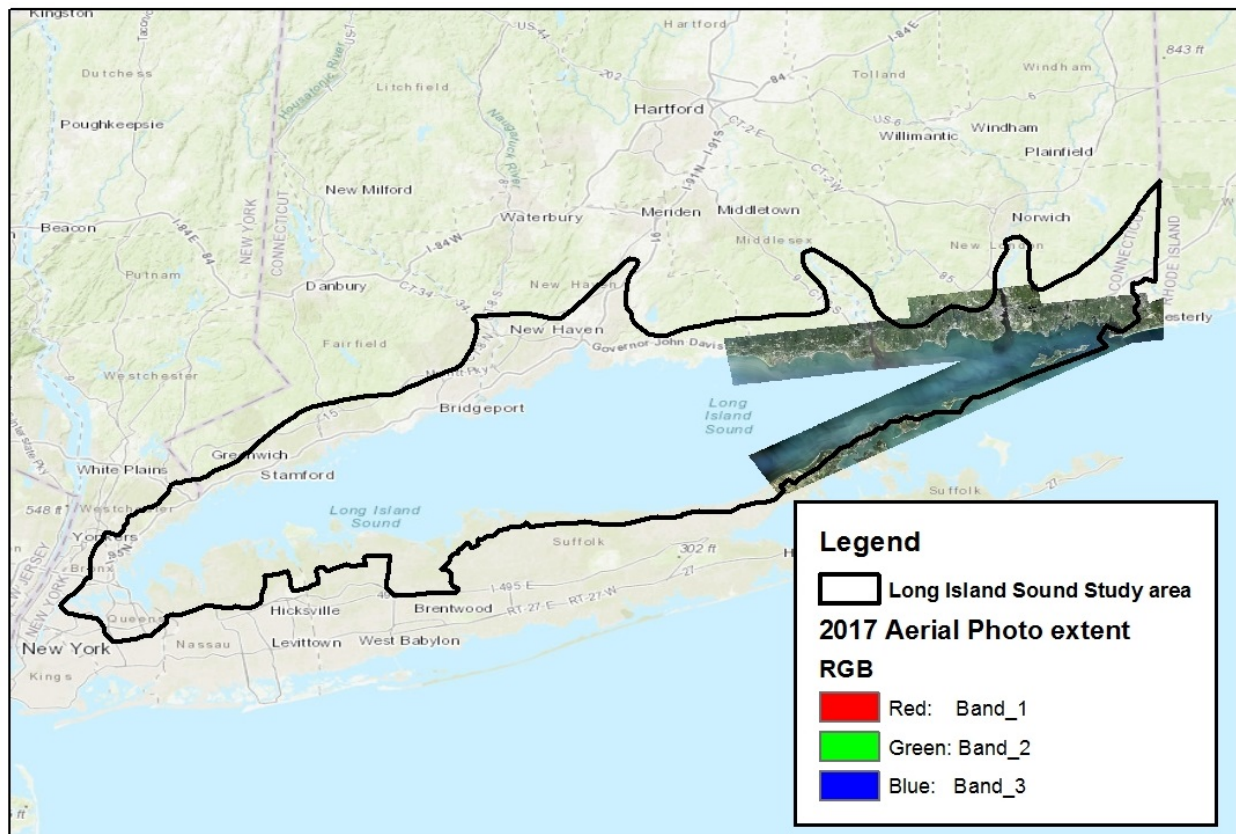


Figure 1. The extent of the aerial photography acquired on June 28<sup>th</sup>, 2017 along with boundary of the Long Island Sound Study ([longislandsoundstudy.net](http://longislandsoundstudy.net)).

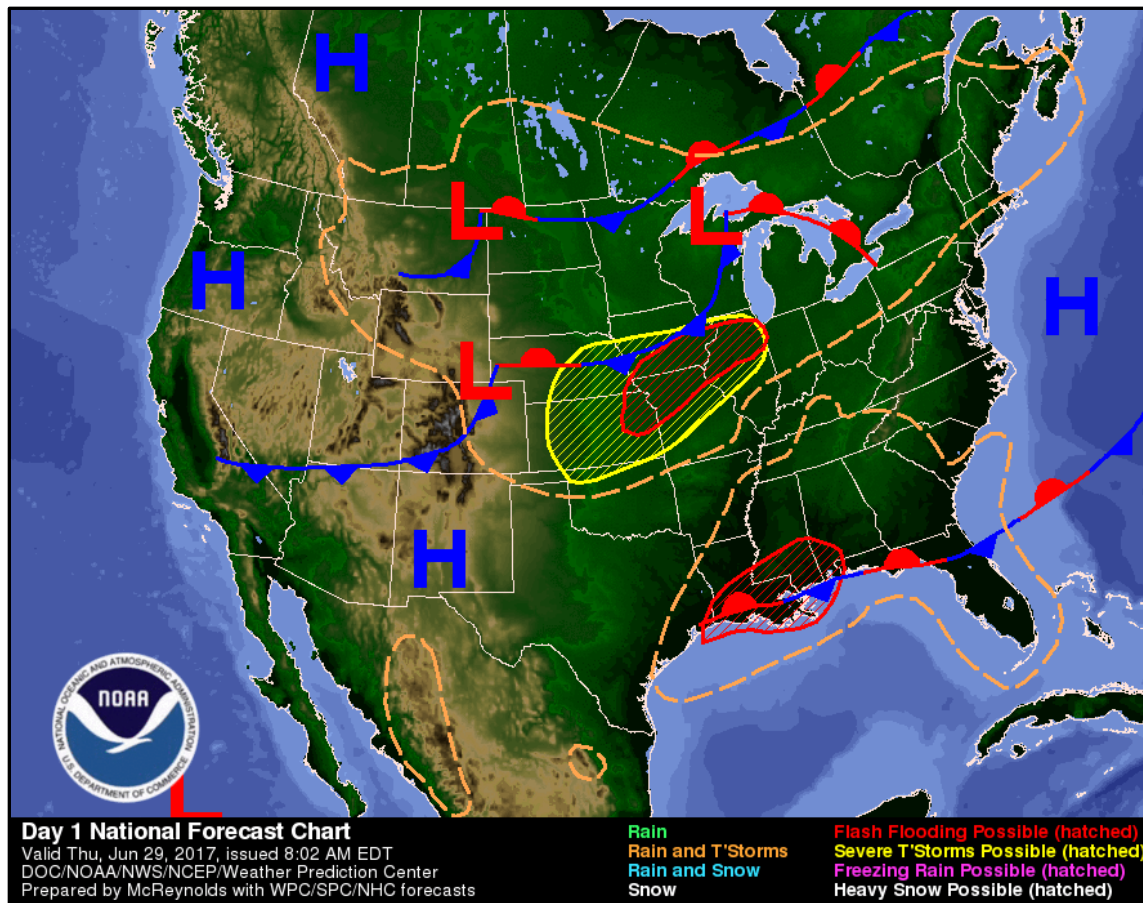


Figure 2. The weather conditions (high pressure and stable fronts along the mid-Atlantic coast) on the date of aerial photography acquisition from the NOAA Weather Prediction Center.

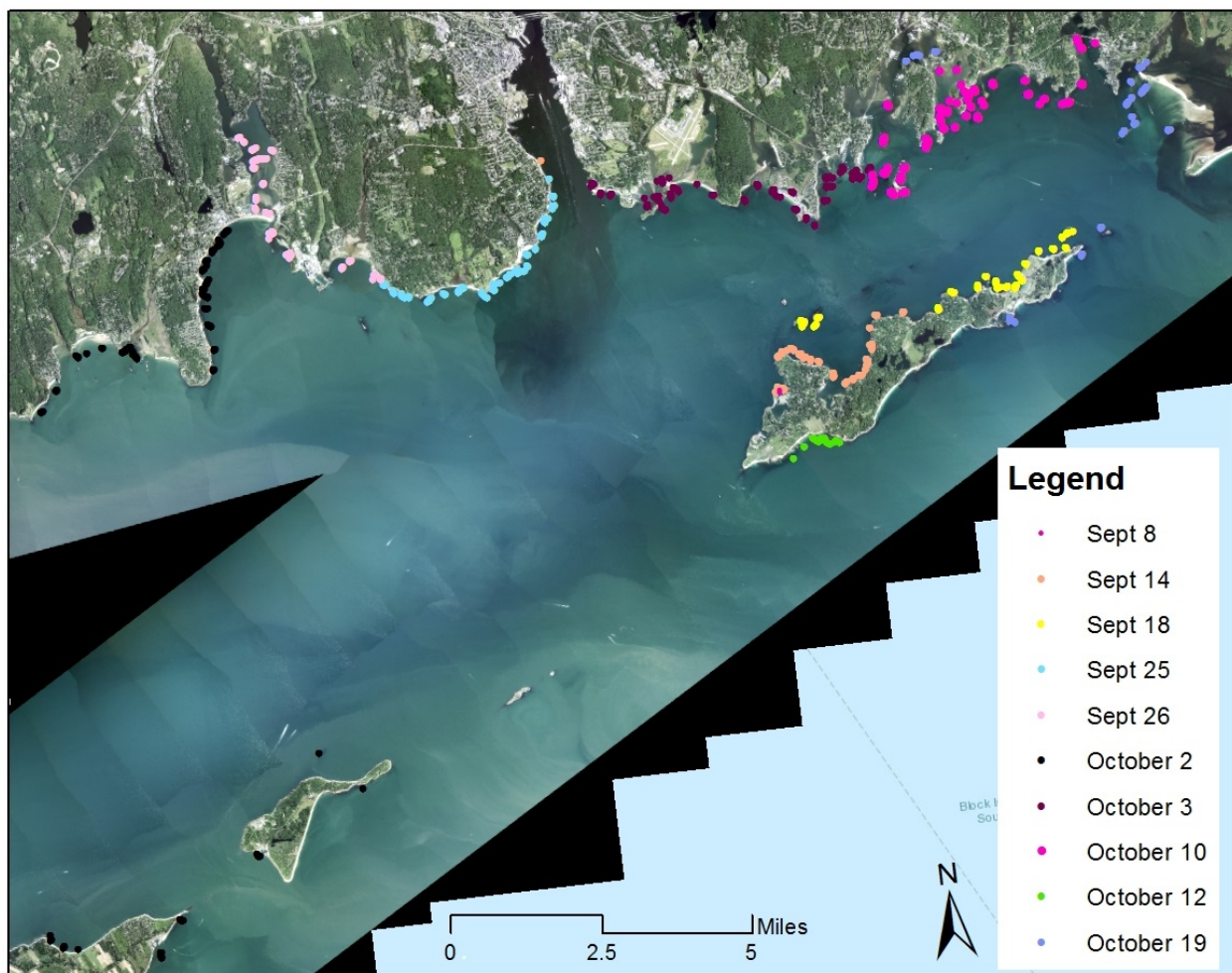


Figure 3. The extent and dates of the GPS and video surveys collected for this project.



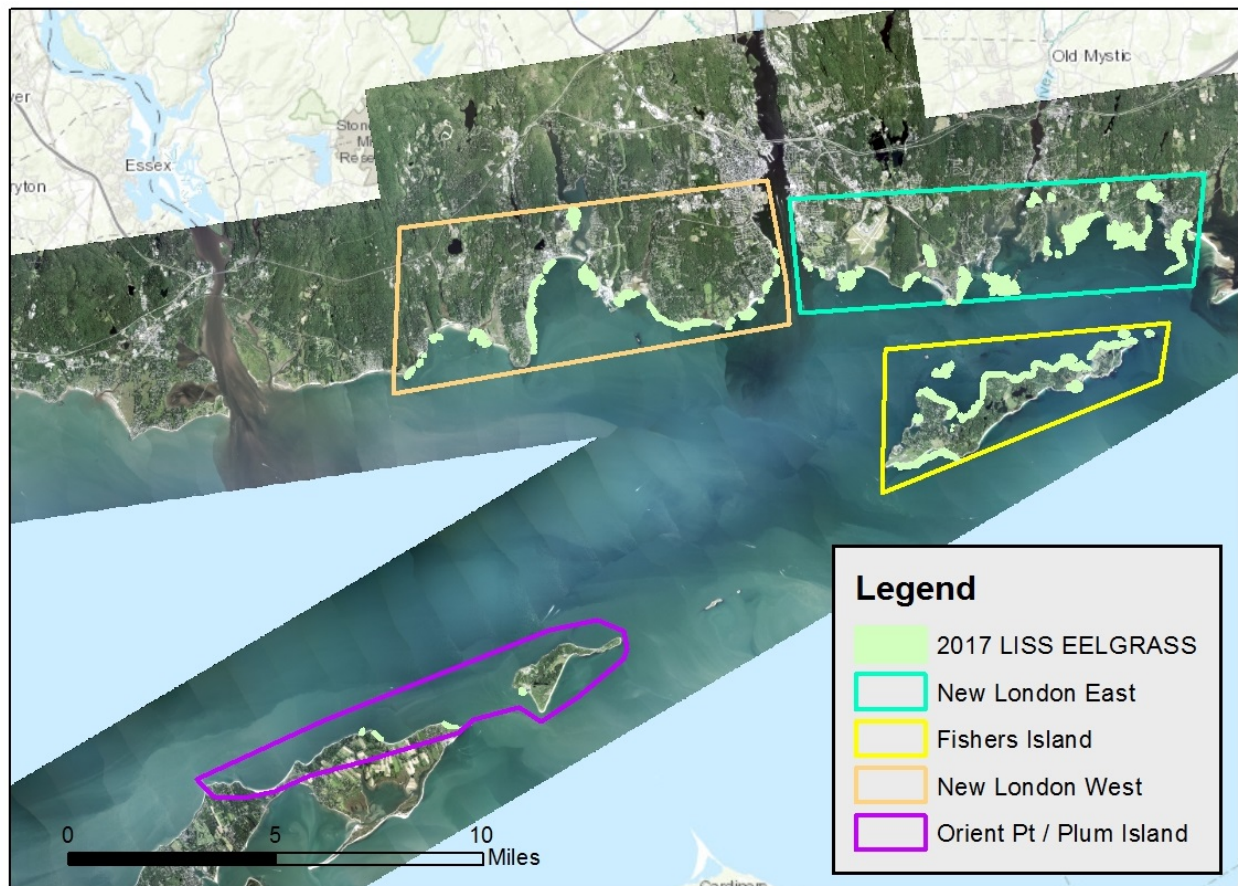


Figure 4. The New London East study area had the most eelgrass (766 acres) of the four we analyzed.

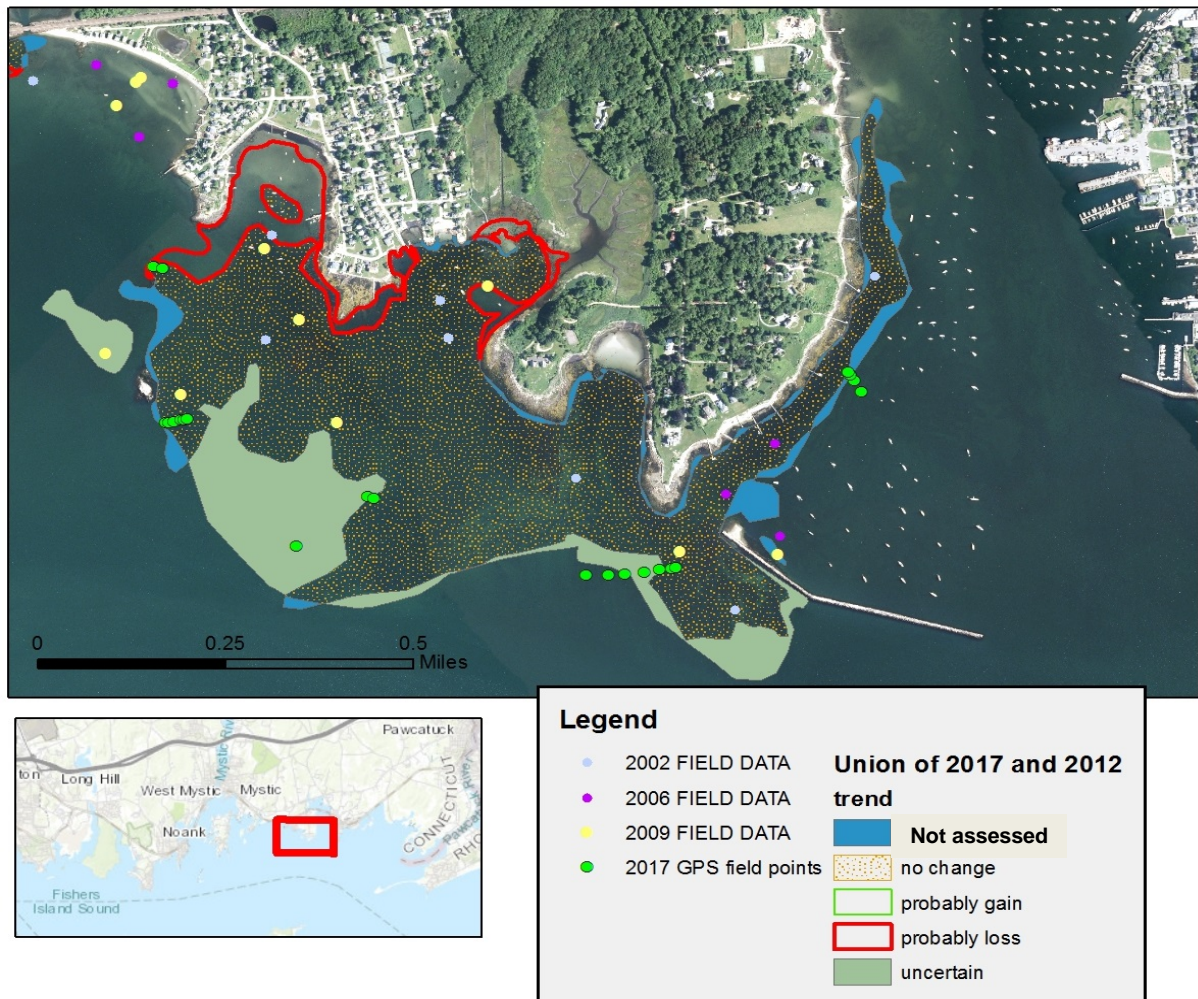


Figure 5. The result of the union of the 2012 and 2017 polygons was five classes of trend categories.



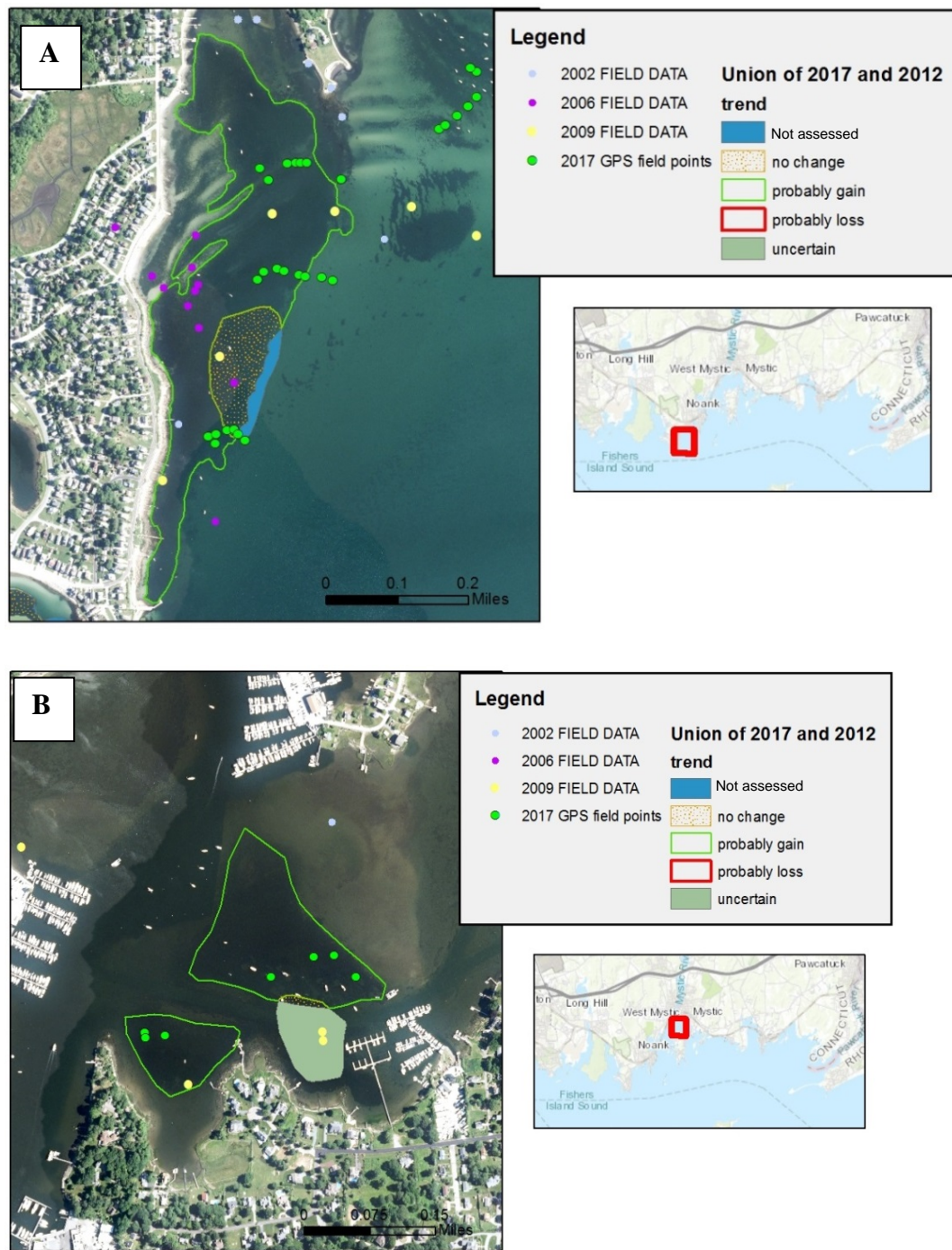


Figure 6A and 6B. These two areas had the most gain of eelgrass from 2012.



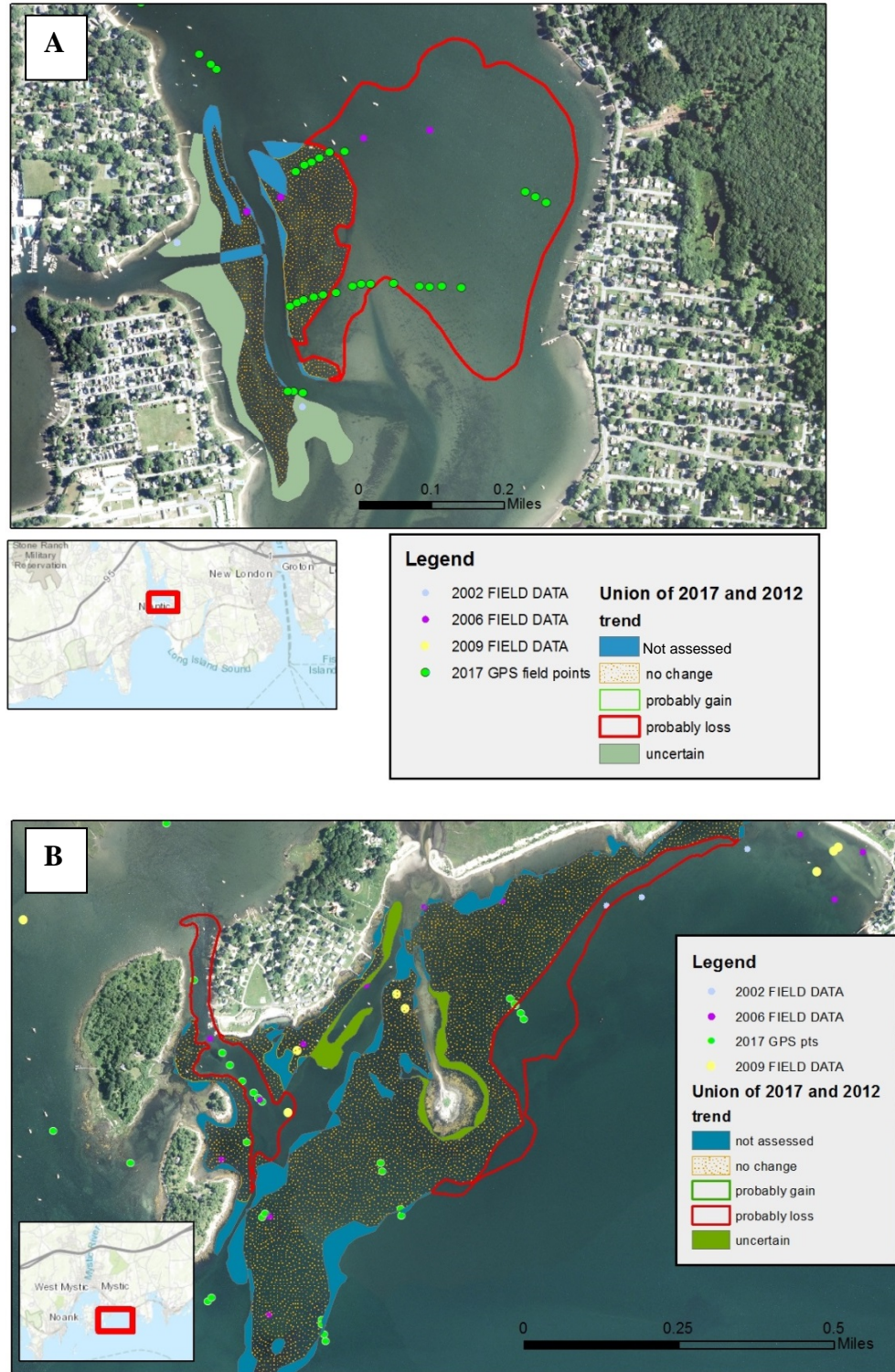


Figure 7. These two sites had the majority of eelgrass loss from 2012.

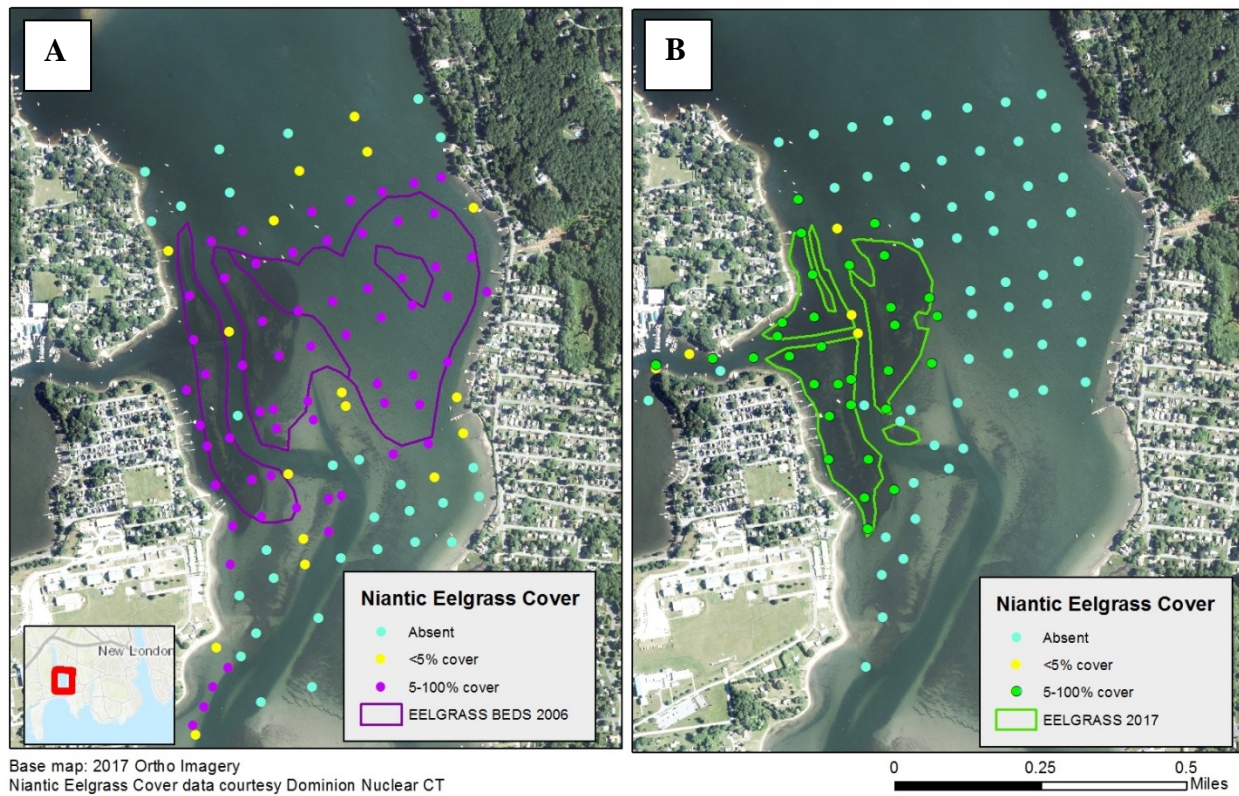


Figure 8. We compared our mapping from 2006 (A) and 2017 (B) to the intensive data collected by Dominion Nuclear and found a favorable comparison.



## APPENDIX – Little Narragansett Bay – Rhode Island

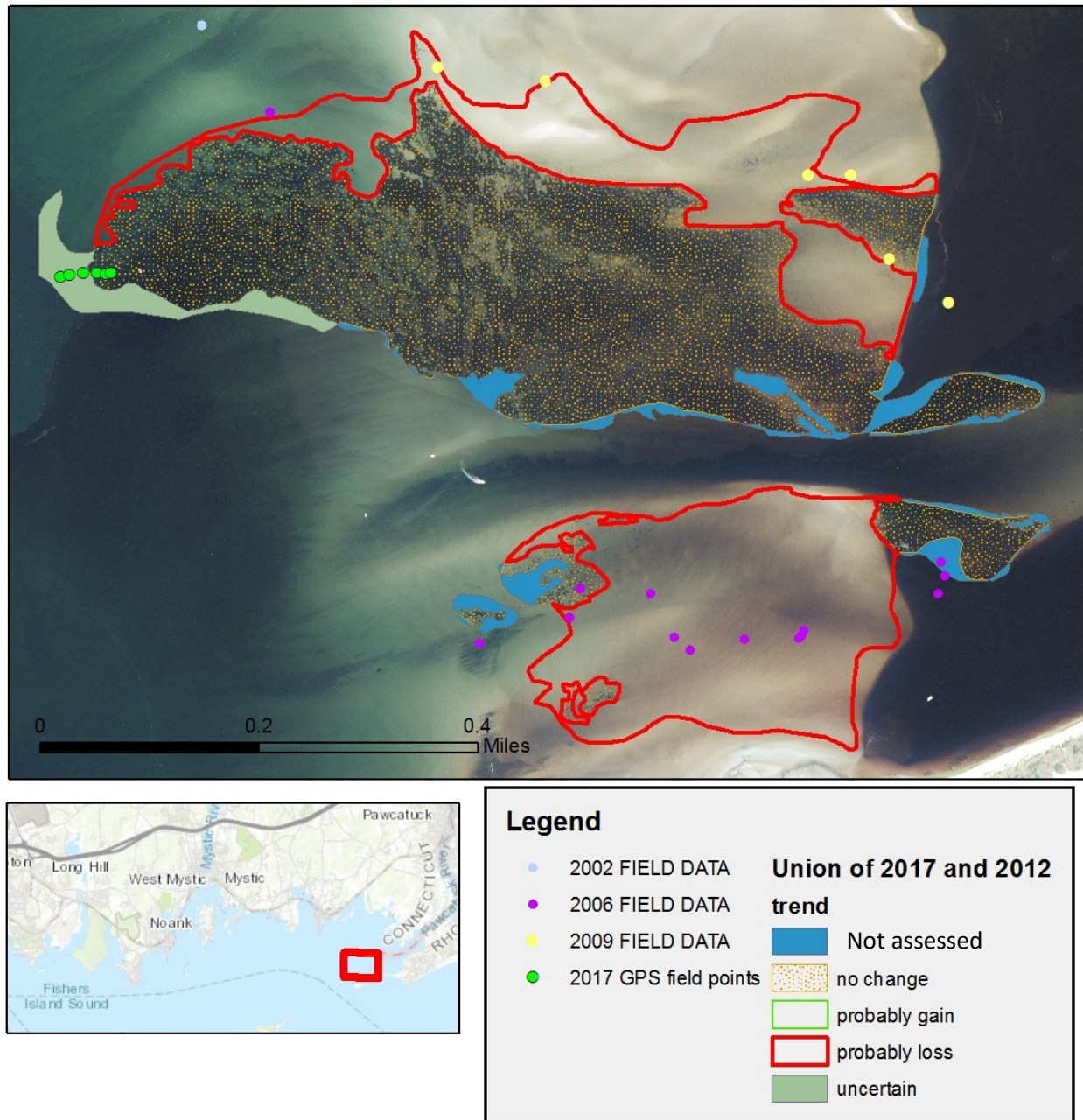


Figure 9. In 2012, 163 acres of eelgrass were mapped by Tiner et al (2013) in Little Narragansett Bay (RI). In 2017, we mapped 93 acres for a 43% loss at this site between the two studies.